

## UNIQUE FLEXIBLE SOLUTION

Future-Proof  
Infrastructure

Guaranteed  
Minimum Charge



## CASE STUDY

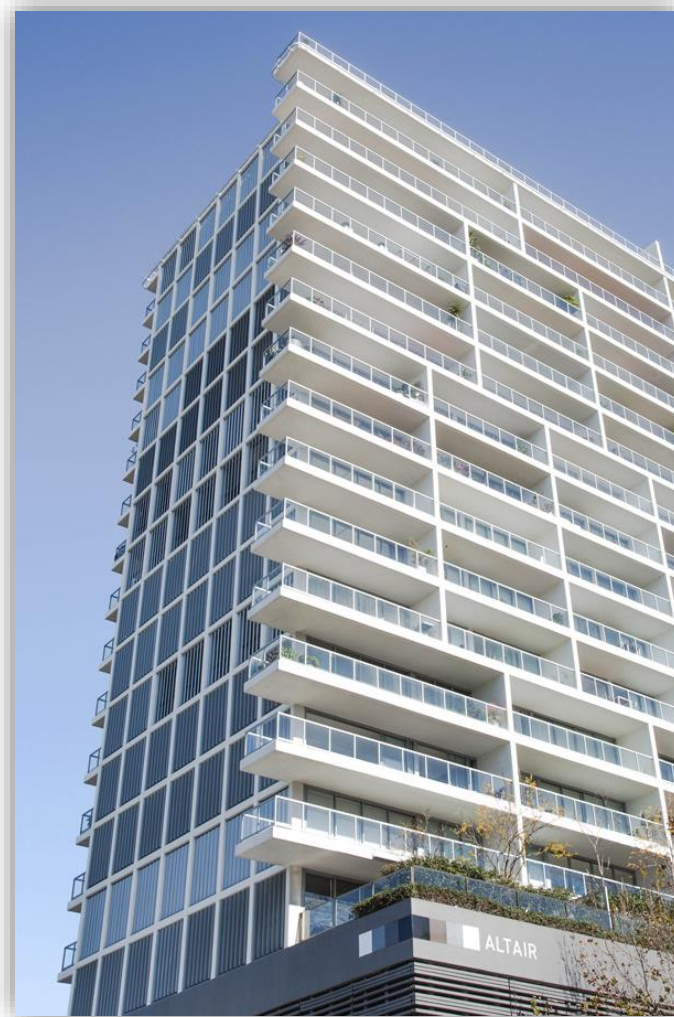
### CLIENT

The 'Altair' is an apartment block of 139 residences and 159 car spaces. Car parking is spread over 3 split levels.

### BRIEF & VeCharge SOLUTION

VeCharge was briefed by The Altair EC to deliver an EV charging solution that would allow **futureproofing** of the building electrical infrastructure to allow all car spaces to receive ANY compatible smart charge station and a **guarantee** that each vehicle could receive a minimum of x2 hrs of full charge (14kWh approx. 100km) to cover the average distance travelled in Sydney (34.5km).

To achieve this VeCharge implemented their **bespoke dynamic load management (DLM) solution** in conjunction with a charge point management (CPM) billing software, new distribution boards for electric vehicles (DBEV's), WiFi network and a full backbone cable tray system for future lot owner installs.



## CHALLENGES

Limited Power  
Supply

High-End  
Building

Extremely Busy  
Concierge

Covid-19  
Restrictions

## OUR APPROACH

**Initial load investigation and power grading study** was conducted in conjunction with our electrical engineer. A detailed report was produced confirming feasibility of the buildings' off-peak capacity providing coverage for all lot owner car spaces to sufficiently charge an average daily Sydney commute of 45kms/day.

**Site mobilisation** was carried out by our qualified in-house electricians and apprentices and included utilising 2 visitor car spaces for site equipment and fabrication area.

**Consistent communication** and pre-arranged drilling periods to minimise disruption to occupants (especially during lockdown home isolation) and **efficient organisation** by our project manager was appreciated by building management.

**Constant courtesy** to occupants and cleanliness by our qualified in-house electricians and apprentices allowed VeCharge to gain the trust and respect of building management and complete all works in a



### What was installed

Our professional in-house installation team completed a full cable tray network (over 300 meters spread over the 3 carpark levels), a sub main cable distribution and a customised sheet metal cover paneling to meet client's high standards.

## INSTALLATION

- Wi-Fi network
- Cloud-Based DLM (dynamic load management)
- A Control and CPM (charge point management billing system)
- A new MDBEV (main distribution board electric vehicles)
- 4 DBEV's over 2 carpark levels.



## TESTIMONIAL



VeCharge has impressed us with the excellent customer service and workmanship. There were many technical challenges, such as limited power supply and site requirements. VeCharge was able to provide detailed advice and implemented all works in a professional manner.

Covid-19 restrictions and the high-end nature of the building required consistent and reliable communication, and VeCharge made sure the project progressed at a high standard and within budget. Disruption was kept at a minimum, cleanliness and constant communication gained my and my owners' respect and trust.

**Written by Mario Caruana**  
**Building Manager | Altair**

## Company Information

**Company Address**  
4/4 Jabez Street  
Marrickville NSW Australia 2204  
**Structure:** Pty Ltd  
**ABN:** 49 122 297186

**Point of Contact:** Michael Brewitt  
**Office:** 1300 315 688

**Email Address:** info@vecharge.com  
**Facebook:** @ VeCharge

**License:** 188046C  
**Memberships:**  
NECA Member  
BICSI Registered Cablers Australia  
EcoSmart Electricians